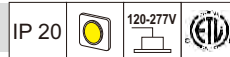
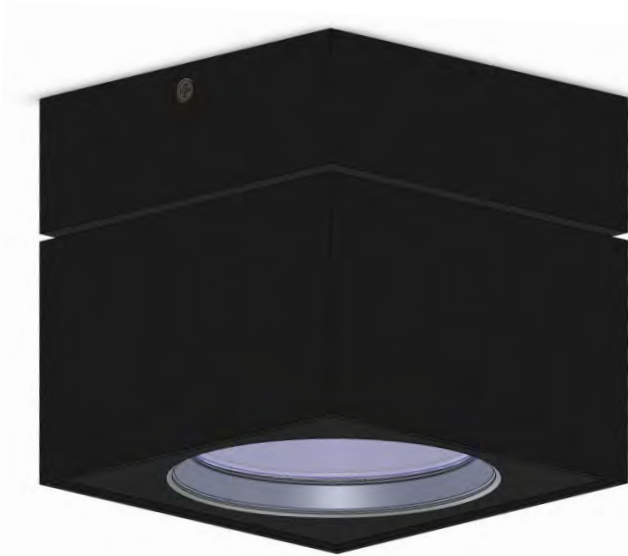


# 906 DOWN LIGHT LUMINAIRES



Catalog No. \_\_\_\_\_  
 Date \_\_\_\_\_  
 Type \_\_\_\_\_  
 Project \_\_\_\_\_

## SHARP CoB LED 32W



### Applications:

Surface mount down light

### Description:

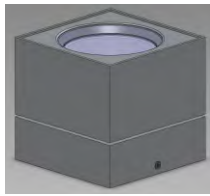
Surface mount square Fixture with latest high output / high efficiency sharp CoB LED provides maximum reliability, Performance, and color consistency . Multiple reflector beam spreads and Finishes allows for creative lighting solution to illuminate architectural spaces. Aluminum housing with separate drive compartment available in Black, White or Silver

### Dimension:

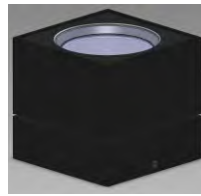
H=5.63" , W=5.9"



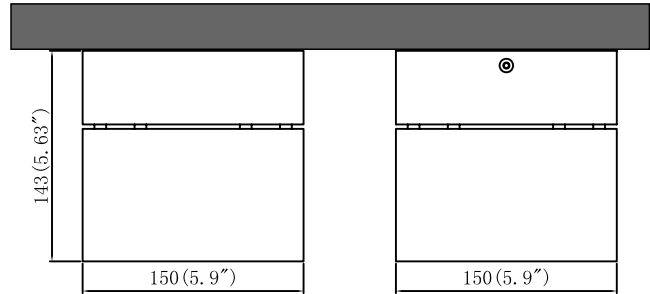
White



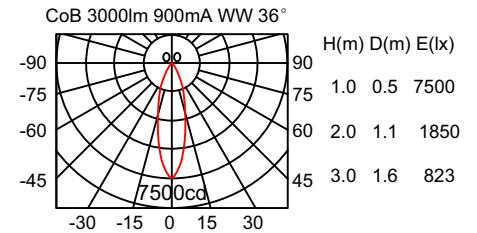
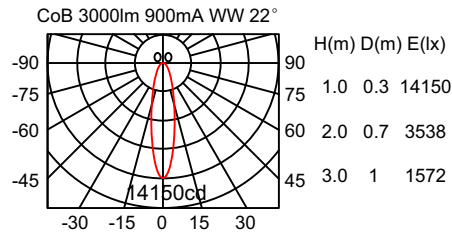
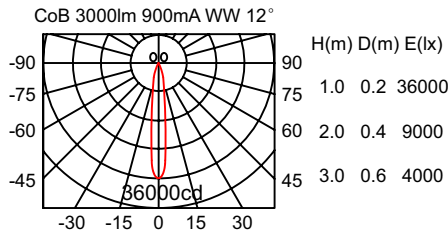
Silver



Black



### Light distribution map:



### Ordering Codes

Follow the steps to specify your fixture. To order a 906 in 900mA driver in @120V in 3000K White with 12 degree reflector

Example: To order 906 Silver with 10 degree reflector in 120V Non-dimmable driver = **906-12-SV-120V-830-9**

1 Product Code	2 Reflector Code	3 Finish Code	4 Voltage Code	5 CCT Code	5 Driver Code
906	12	WH White SV Silver BK Black	120V 277V	830 840	(9) 900mA